

HoC Meeting

15 March 2026
15:00 – 16:30 (SAST)

Campsite and Logistics



Agenda

1. An overview of the campsite and area
2. Arrowe Park campsite layout
3. Sub-camp layout
4. Available facilities
5. Questions session



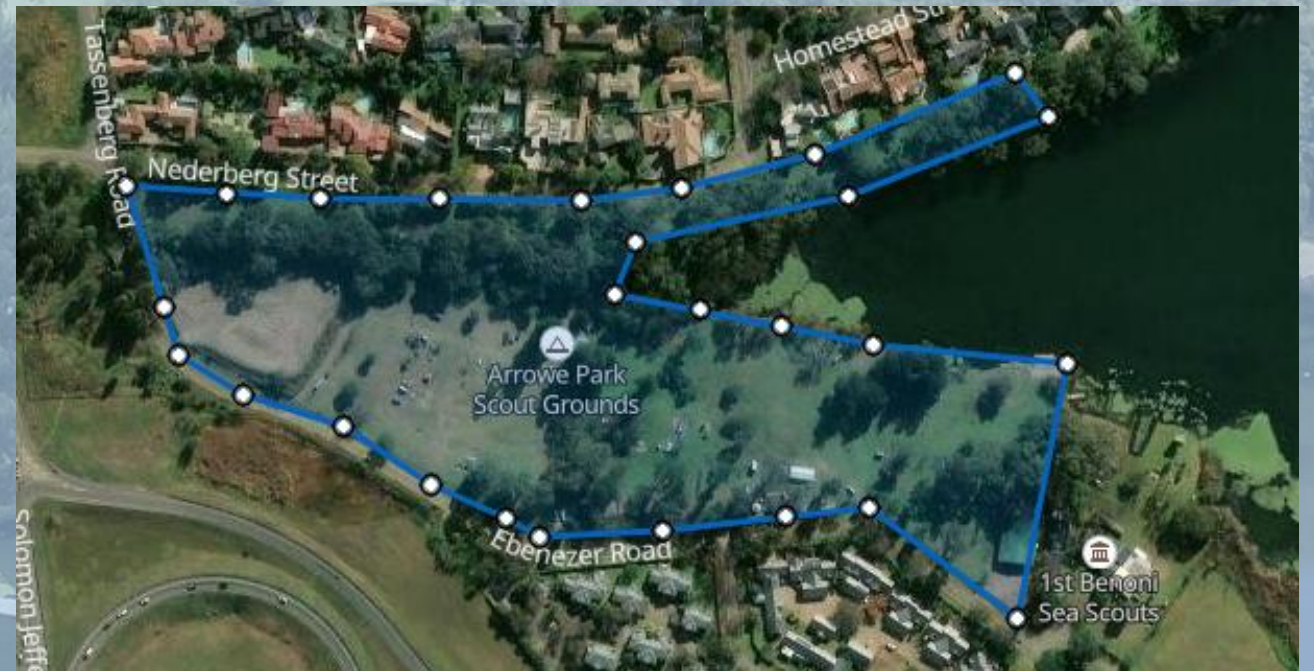
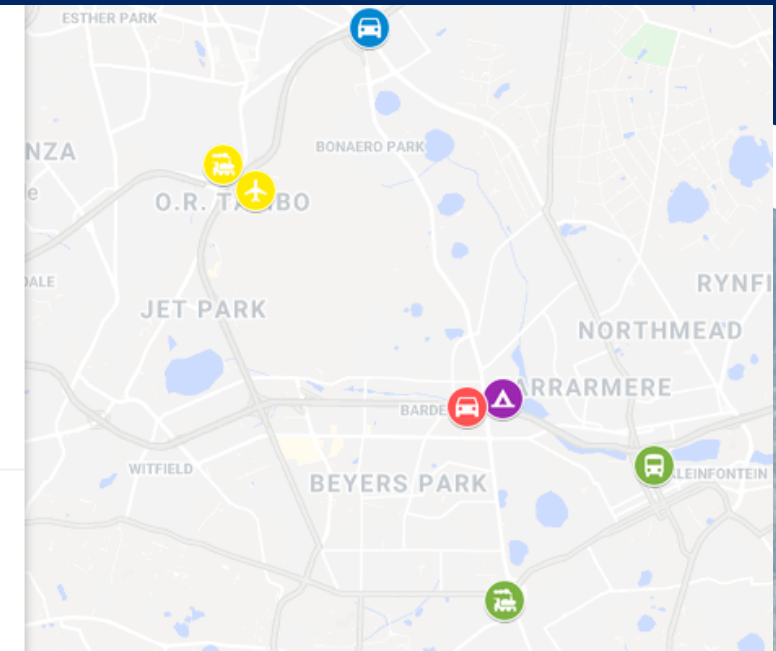


Arrowe Park and it's surroundings

- Arrowe Park is a Scouts SA owned property.
- Situation on a lake in the suburban area of Benoni.
- A track history of hosting large events (+/- 3,000 participants & staff).
- Next door to two scout group halls.
- ± 60,000m² | 500m across x 200m wide.
- Situated:
 - 500m off N12 highway
 - 6km from Dunswart station
 - 12km from OR Tambo Int Airport

Transport Access


- ▲ Arrowe Park
- 🚗 N12 Highway Offramp
- 🚗 R21 Highway Offramp
- ✈️ OR Tambo International Airport
- 🚆 Rhodesfield Gautrain Station
- 🚗 Dunswart Taxi and Train interchange
- 🚗 Lakeside Mall Long Distance Bus stop

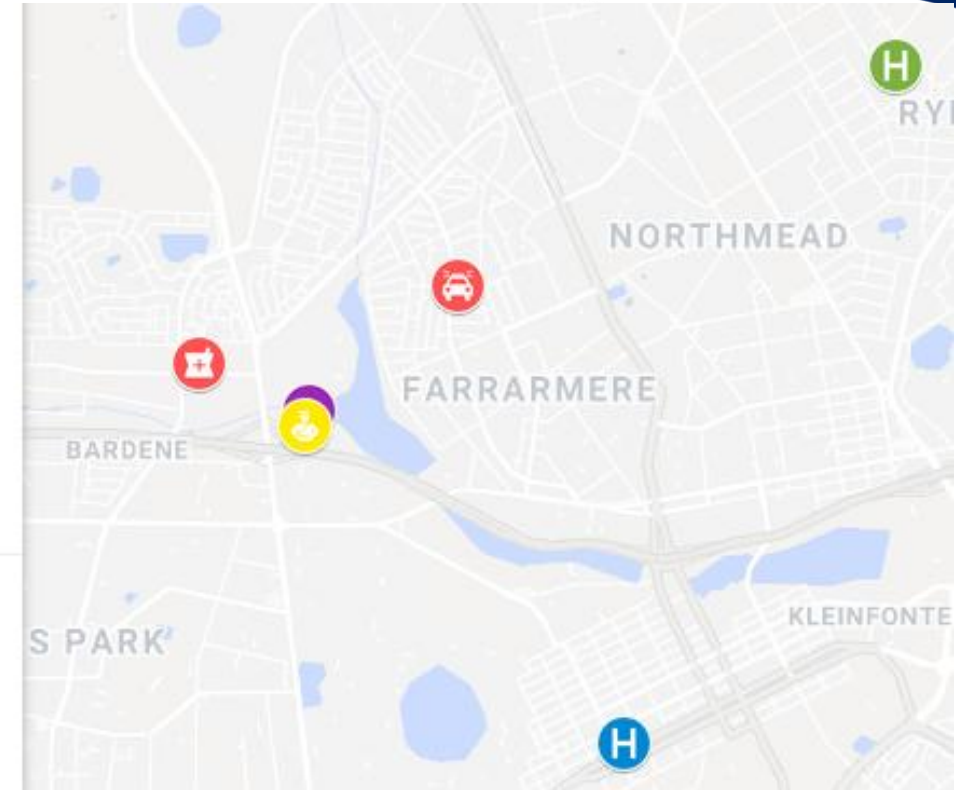


Arrowe Park Emergency Services

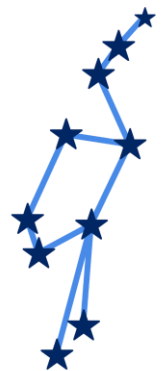


Emergency Services

-  CMS Security control room
-  Glynnwood Hospital
-  Linmed Hospital
-  Arrowe Park
-  Security boom
-  Clicks Pharmacy



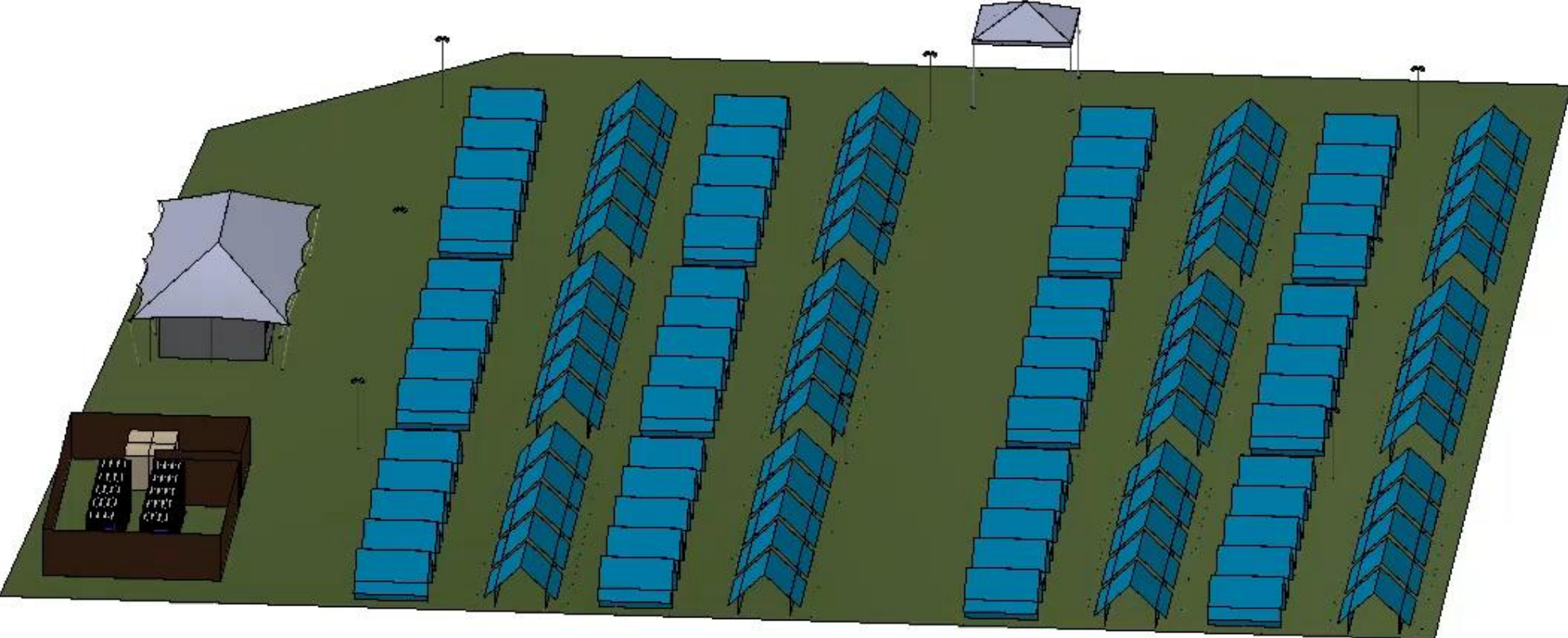
- **Security services - 3,5km travel.**
- **Two hospital in the area - 5km & 7,5km travel.**
- **Completely fenced off with 3 access controlled gates and security checkpoint.**
- **Pharmacy - 1,5km travel.**



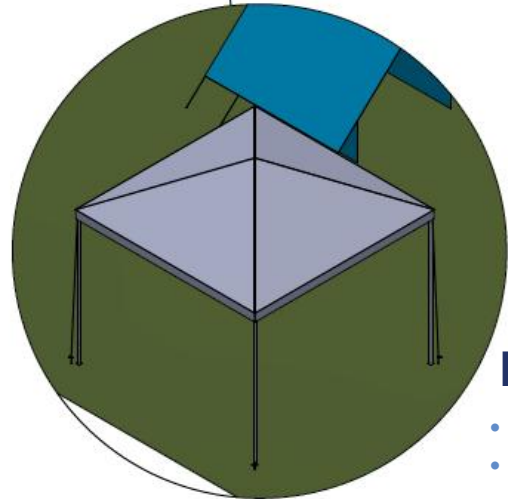
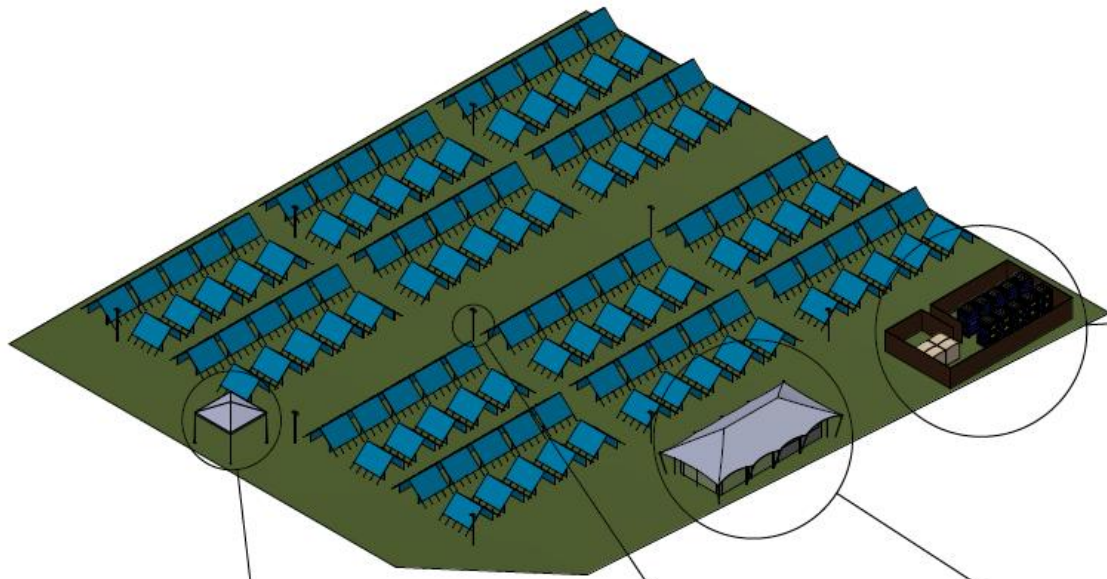
Arrowe Park Camp Layout



A Brief View Of The Sub Camp

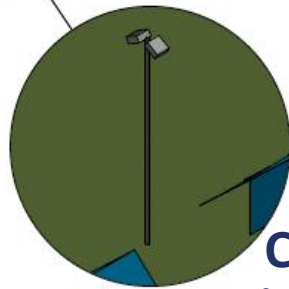


Sub Camp Layout



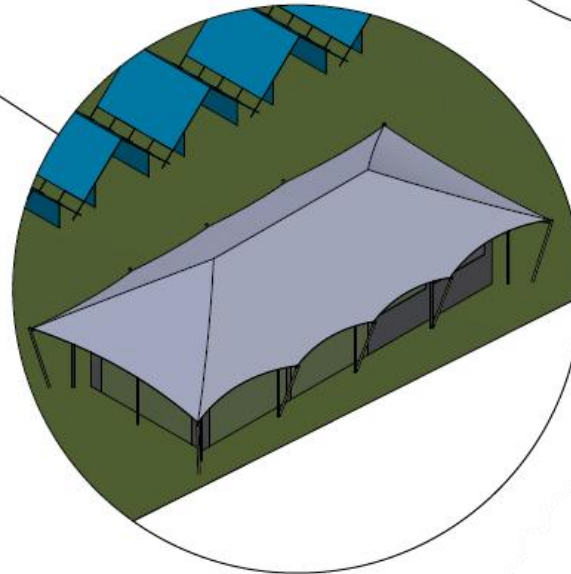
Mess Tent

- Cooking area
- Cleaning area
- Fire safety



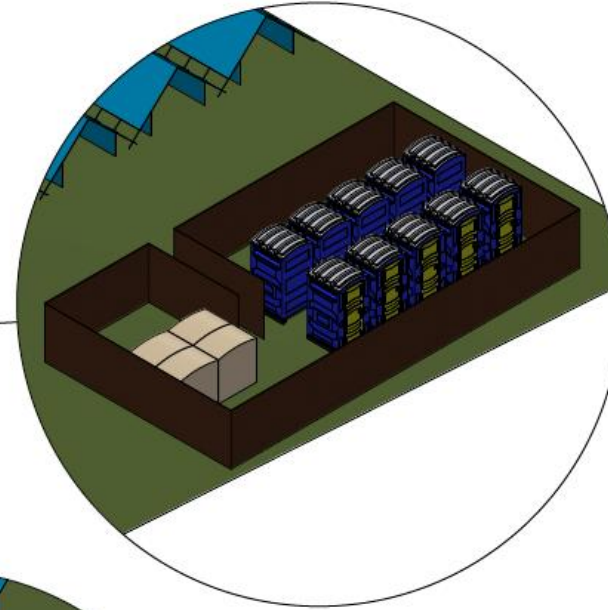
Camp Lighting

- Solar
- Dimmed



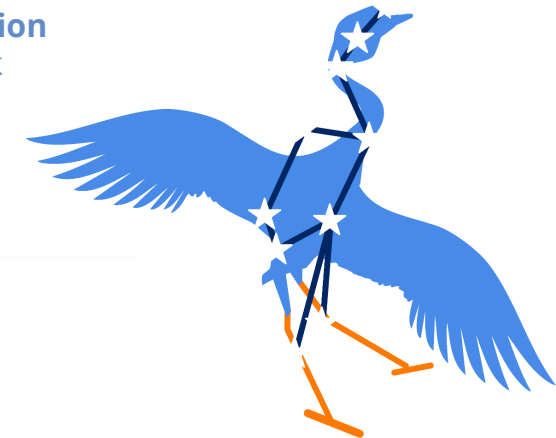
Sub Camp Hub

- Relax/social area
- Charging station
- Wi-Fi network
- Info Hud
- IST team



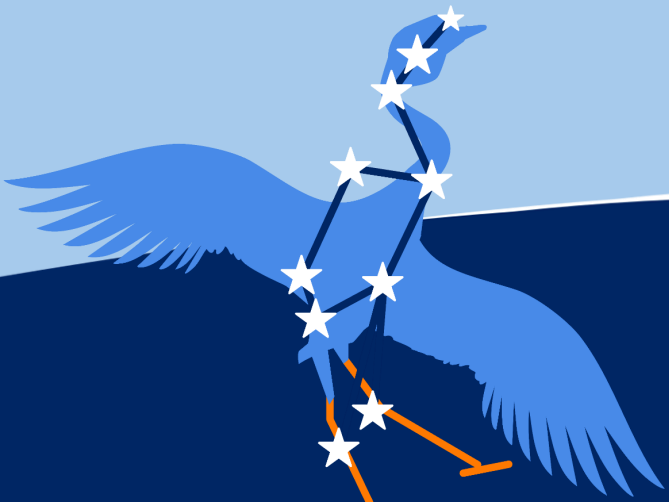
Portable Toilets & Showers

- Hot & cold water
- Cleaned daily



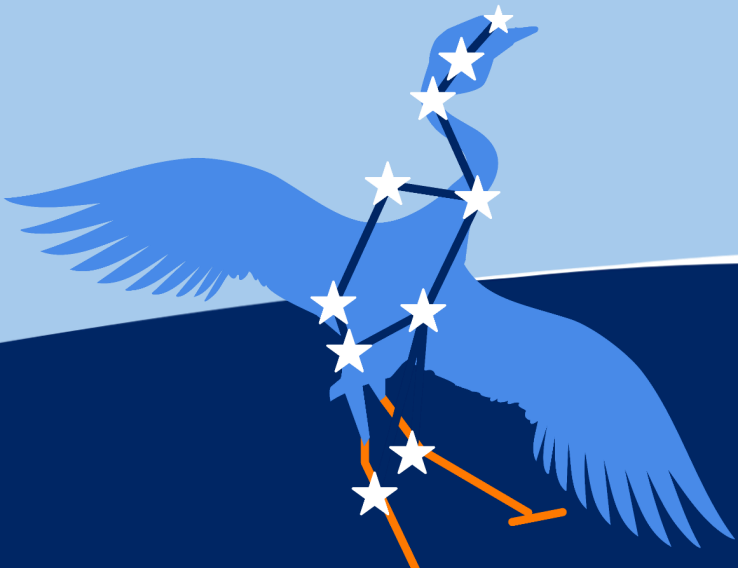
On Camp **Facilities**

- Full medical, security and fire team.
- Listening Ear team.
- Cleaning & waste disposal team.
- Merchandise store
- Food stands/stores.
- Campfire circle
- Chaple
- Running/drinking water



Off Camp **Facilities**

- Shopping centre within 1,5km of the campsite
 - All groceries
 - SIM cards
 - Clothing
 - ATM
- Hospitals, Fire dept. & security teams have been alerted & prepped.



Reminder

| Network Provider | Bundle Name / Type | Data Amount | Approx. Cost (ZAR) | Validity |
|------------------|----------------------|-------------|--------------------|----------|
| MTN | Monthly Data Bundle | 10 GB | R99 | 30 days |
| MTN | Monthly Data Bundle | 20 GB | R149 | 30 days |
| Vodacom | Mega Bundle | 10 GB | R125 | 30 days |
| Vodacom | Mega Bundle | 20 GB | R199 | 30 days |
| Cell C | 30-Day Bundle | 10 GB | R99 | 30 days |
| Cell C | 30-Day Bundle | 20 GB | R149 | 30 days |
| Telkom | FreeMe 30-Day Bundle | 10 GB (++) | R99 | 30 days |
| Telkom | FreeMe 30-Day Bundle | 20 GB (++) | R149 | 30 days |

How to Get Connected: A Simple Step-by-Step Guide

- 1. Find a Store:** Go to any supermarket (Checkers, Pick n Pay), petrol station (Engen, BP), or official network store (MTN, Vodacom, etc.) at the airport or in any mall.
- 2. Buy a SIM:** Ask for a starter pack (SIM card). This usually costs around **R10 - R20**.
- 3. Register (RICA):** You **must** present your **passport** and provide the address where you are staying (e.g., Arrowe Park). The cashier will help you with this process.
- 4. Top Up (Recharge):** Buy airtime/voucher for the amount of the data bundle you want (e.g., R149 for the MTN 20GB plan).
- 5. Load the Bundle:** Dial the USSD code on your phone to purchase the data bundle.

Things you can start to gather

- Sleeping bag (winter)
- Tent (per person)
- Hat
- Sunscreen
- Water Bottle
- Clothing (don't let winter fool you, it can be warm)
- Hiking boots
- Warm socks
- Open shoes (sandals, e.g.)
- Laundry bucket/ bag with biodegradable soap
- Toiletries
- Head torch
- Personal Medication
- Mess kit for eating (Including a closed "lunchbox" with a lid for packed lunches with sustainability in mind.
- This should all be packed into a BACKPACK (no wheelie bags, please)

<https://www.scouts.org.za/2nd-africa-scout-moot-bulletin-hub/>



**Want to know
more about the
2nd Africa Rover
Moot?**

Scan the QR code to find
out more



Questions?



Stay Up To Date!



@moot_africa



<https://www.scouts.org.za/2africascoutmoot>



2nd Africa Moot 2026



2arm.ssa@scouts.org.za

